



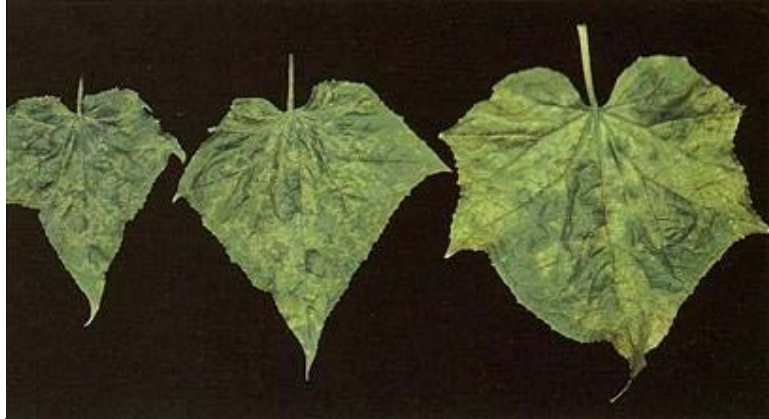
Cucumber Mosaic

About Cucumber Mosaic

Cucumber Mosaic virus (CMV) is a virus that affects a wide variety of host plants including tomato, pepper, cucumber, melons, squash, spinach, celery, beets, and petunia.

Damage

New growth is cupped downward and leaves are severely ruined with splotches of light green and dark green. Plants are stunted and fruits are covered with bumpy protrusions. Virus diseases cause mottling of light green, yellow, or white areas on leaves, clearing of veins, thickening of leaves, and reduction in growth and yield. Fruit may be deformed.



Leaves showing discoloration due to Cucumber Mosaic

Solutions

Cultural control Sanitation is the primary means of controlling virus diseases.

- Remove infected plants immediately to prevent spread of the disease.
- Do not plant vegetables affected by viruses next to each other.
- Eliminate weeds and other infected plant parts that may spread the virus.
- Cover young plants with row covers to protect them from insects that spread the virus.



Cover young plants to protect them from insects that spread the virus.

Prepared by Frank Zalom, Mark A Bell and Masooma Azam 2008

Reference: <http://www.ipm.ucdavis.edu/index.html> ; <http://www.cdfa.ca.gov/phpps/PDEP/prpinfo/>
Statewide IPM Program, Agriculture and Natural Resources, University of California

For more information visit: International Programs <http://ip.ucdavis.edu>

Copyright © UC Regents Davis campus, 2012. All Rights Reserved.